



WorkPath™

Advanced Work Process Automation & No-Code REST API Integration

Automate complex work &
business processes for data
& documents.

ELIMINATES MANUAL PROCESSING

An affordable, no-code automation platform with RPA (robotic process automation), ETL (extract-transform-load), and no-code REST API integrations.

Automation of Manual Work Processes

WorkPath is an all-inclusive platform for the automation of all types of manual processing of data and documents.

WorkPath's key value is eliminating tedious manual processes - this reduces workforce labor, greatly improves processing speeds and communications, and eliminates paper and processing errors - all contribute to significant cost reductions.



Rapid No-Code REST API Integration

WorkPath - with its **Connect** module - enables the rapid design and implementation of REST API integrations between different applications.

No-Code design allows for the quick design and implementation of bidirectional data exchange between disparate cloud and on-premise applications.

Utilizes both RPA & ETL

WorkPath achieves its advance design features through both RPA (robotic process automation) and ETL (extract-transform-load) capabilities.

RPA and ETL provide different methods of advance processing of data and documents. This enables a wider range of automation and transformation possibilities not found in other applications.

RPA focuses on eliminating repetitive manual tasks, whether large or small, that people in your organization perform. The RPA-centric process capabilities are extensive and allow the automation of these tasks.

ETL further enables these RPA-based automations so data and documents can be conditionally processed, data manipulated, and data converted and transformed.

WorkPath automations quickly get your critical information to the right people and the right applications.

KEY BENEFITS

- » Automates essential work processes
- » Eliminates repetitive manual processes
- » Lowers costs & eliminates processing errors

KEY DESIGN FEATURES

- » No-code, drag & drop easy design element
- » Rapid design means rapid implementation
- » Optional no-code REST API integration

Deep Integration with Cloud Repositories

WorkPath is deeply integrated with the leading cloud-based repositories including: SharePoint, Google Drive, OneDrive, OneDrive for Business, Dropbox, and Box.

Create processes that automatically upload documents to the right repository folder with the accurate metadata.

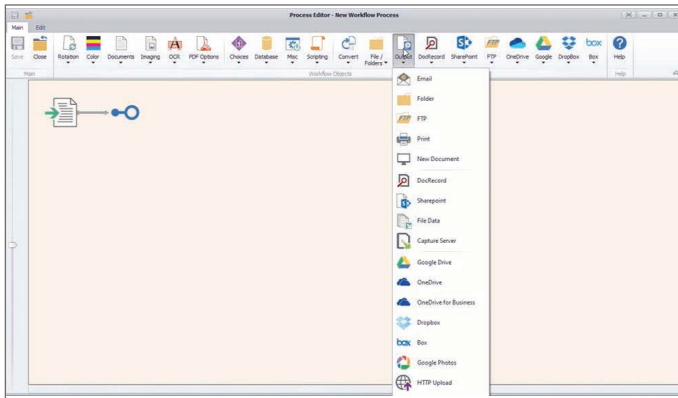


INTUITIVE & ADVANCED PROCESS AUTOMATION BUILDING

No-Code & Menu-Driven Makes Design Fast

WorkPath's menu-driven interface allows for the rapid design of customer automated processes in less time than other applications.

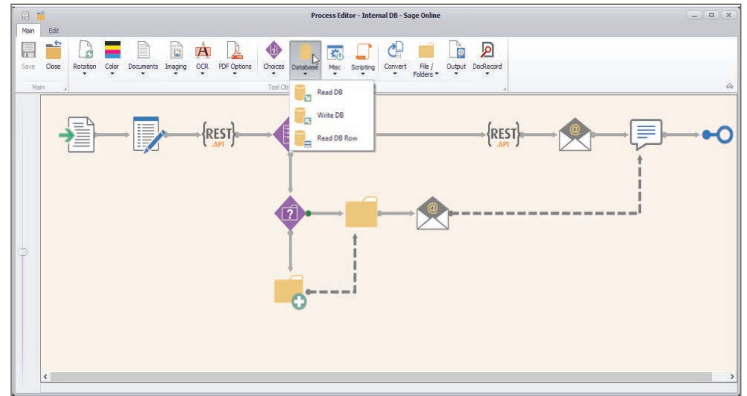
A full range of extensive drag-and-drop, no-code menu options enables faster production and easy changes.



Simple Allows Complex

WorkPath's simple snap-to element interface enables rapid building of custom and complex processes.

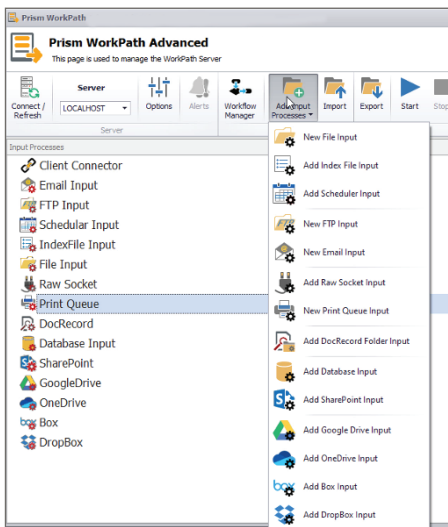
This allows you to design automations in hours rather than weeks.



Easy to Input Data & Documents

Start with adding a data or document input from a wide range of sources including:

- » Database, email, file, folder
- » Web Repository (SharePoint, Google Drive, OneDrive, Box, and Dropbox)
- » FTP, SFTP, Print Queue
- » DocRecord, and many more

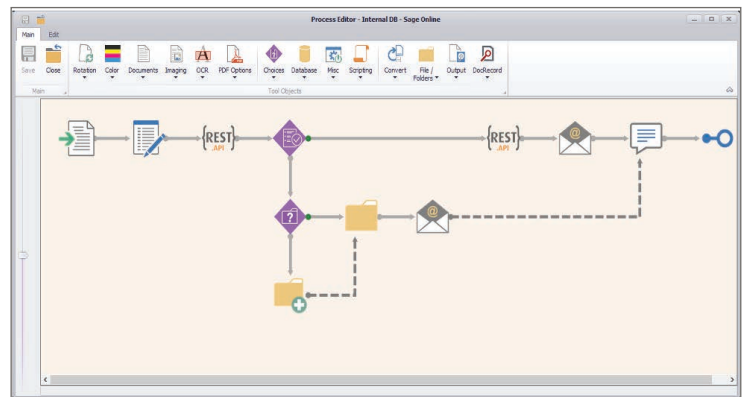


Rapid Implementation

Easy and quick design also means easy to test and fast to implement.

Testing WorkPath automations is simple and allows for the rapid debugging of design errors.

Once tested, it's easy to implement the automations.



Rapid no-code design enables rapid company-wide deployment.

WorkPath Connect™

ESSENTIAL REST API INTEGRATION WITH ADVANCED WORKFLOWS

Rapid, No-Code REST API-to-API Connections

WorkPath Connect - an optional module to WorkPath - enables different applications to easily and quickly exchange data and documents through their REST APIs.

WorkPath Connect is designed to use WorkPath's advanced work processing platform.

Designed for REST API & Workflow Projects

WorkPath Connect is designed for those essential projects that require REST API integrations with advanced workflow of data and documents. It doesn't have the feature-bloat that is commonly found in other REST API integration applications.

It is a no-code application so you don't need a software developer to achieve connections.

These REST API connections can be achieved quickly and then rapidly deployed.

WorkPath Connect works with SaaS, on-premise, and legacy applications utilizing REST APIs.

Easy & Rapid Configuration

WorkPath Connect takes the effort out of REST API integrations between applications.

Simplified Interface for Authentication

Easily supports Name and Password (Basic/NTLM) parameter and/or header values. Includes OAuth v2 support with auto refresh and supports data preview and test modes.

Easy Endpoint Configuration & Testing

Easily test endpoints and review outgoing and returned data from a single easy-to-use interface.

Multi Endpoints in a Single Session

Easily add multiple REST API endpoints to a single session. Eliminates multiple session logins to test endpoints.

Conditional Endpoints

Make your endpoints conditional with an easy-to-use expression syntax - run an endpoint only when specific data is returned.

Pass Data to Other Endpoints

Apply extensive data and document transforms including: data validation and correction, file and image conversions, document clean-up and manipulation, OCR, document construction.

Data Lists

Easily handle returned lists of data - extract single list items and perform additional processing based on their value.

KEY BENEFITS

- » Rapid REST API Integrations & deployment
- » Connect SaaS, on-premise & legacy apps
- » Rapid development times saves money

KEY DESIGN FEATURES

- » No-Code design
- » Advanced workflow automation platform
- » Employs RPA & ETA capabilities



Low cost, no-code REST API connection with intelligent work process automations.

INTELLIGENT AUTOMATED PROCESSING FOR ALL REQUIREMENTS

		WorkPath Desktop	WorkPath Standard	WorkPath Advanced
Overview	Desktop vs. Server Based	Desktop	Server	Server
	Optimized for work processes	Documents	Documents	Data and documents
	License platform	Per workstation	Per server	Per server
	License duration	Perpetual	Perpetual	Annual
	Desktop PDF and document editing	•		
	WorkPath Connect module capability		•	•
Enabled Input Objects	Folder watch, FTP, RAW Socket		•	•
	Print queue	•	•	•
	Email (IMAP/ POP) with oAuth Support		•	•
	Prism DocRecord		•	•
	File index (XML/CSV/JSON), Database			•
	SharePoint, Google, OneDrive, Dropbox, Box			•
Process Any Object	Pop-up dialogs	•		
	Rotation, Color, Document manipulation	•	•	•
	Advanced imaging, OCR and Barcode	•	•	•
	PDF security and metadata	•	•	•
	Choice (Decisions)	•	•	•
	Database, CSV Reader, Read and Write to file	•	•	•
	Correction/Validation, Debut writer	•	•	•
	Scripting	•	•	•
	File conversion, File/Folder	•	•	•
	HTML reader			•
	Server global variables		•	•
	Dictionary data objects	•	•	•
	Advanced error handler object			•
Output to Any Object	Folder, FTP, Printer	•	•	•
	Prism DocRecord, Prism Capture	•	•	•
	Email (SMTP/Exchange/O365) oAuth	•	•	•
	File index data (CSV/XML/JSON)	•	•	•
	Web (Google/OneDrive/Dropbox/etc)	•	•	•
	SharePoint	•	•	•
	Enhanced Excel output	•	•	•
	HTTP upload			•
Advanced Web Automation	Prism DocRecord	•	•	•
	SharePoint, Google, OneDrive, FTP, Box, Dropbox			•
Reporting and Logging	Standard logging	•	•	•
	Advanced logging options			•
	Reporting metrics			•